

Sommario

Summary

Sumario

Registri 1 Asse

Single axis back gauges
Topes traseros 1 Eje

Registri 2 Assi

Back gauges 2 axis
Topes traseros 2 Ejes

Registri 3 Assi

Back gauges 3 axis
Topes traseros 3 Ejes

Registri 4 Assi

Back gauges 4 axis
Topes traseros 4 Ejes

Registri 5 Assi

Back gauges 5 axis
Topes traseros 5 Ejes

Registri 6 Assi

Back gauges 6 axis
Topes traseros 6 Ejes

Registri 9 Assi

Back gauges 9 axis
Topes traseros 9 Ejes

Motori e servoazionamenti

Motors and servodrives
Motores
y servoaccionamientos

Battute di Ricontra intercambiabili

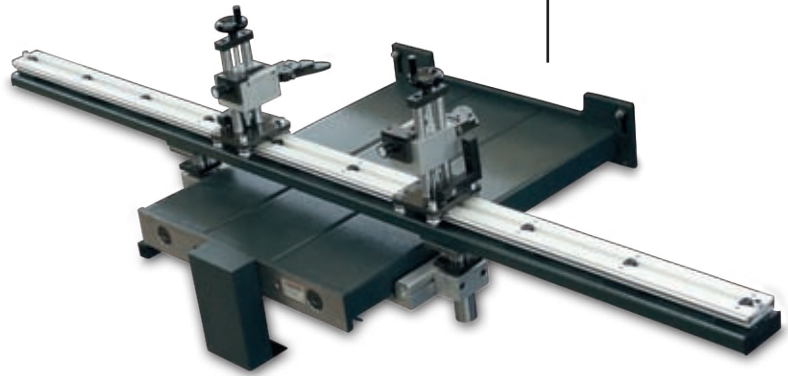
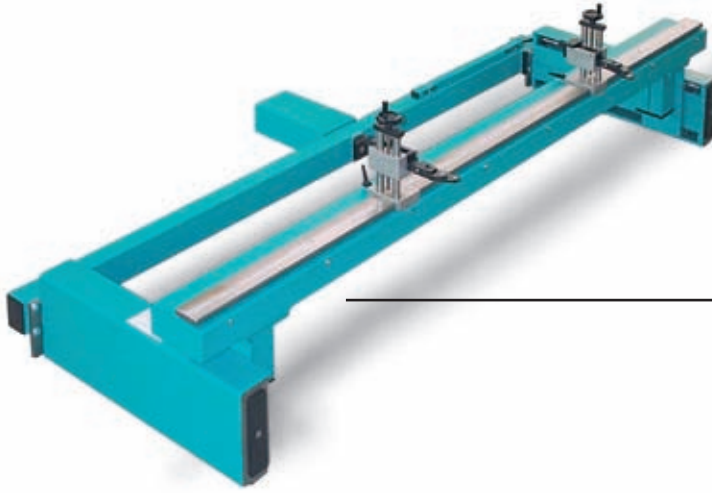
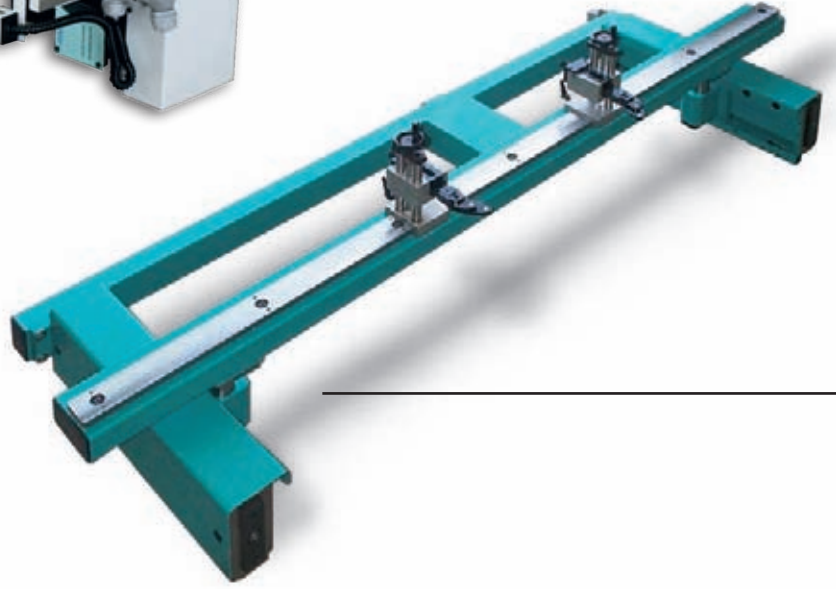
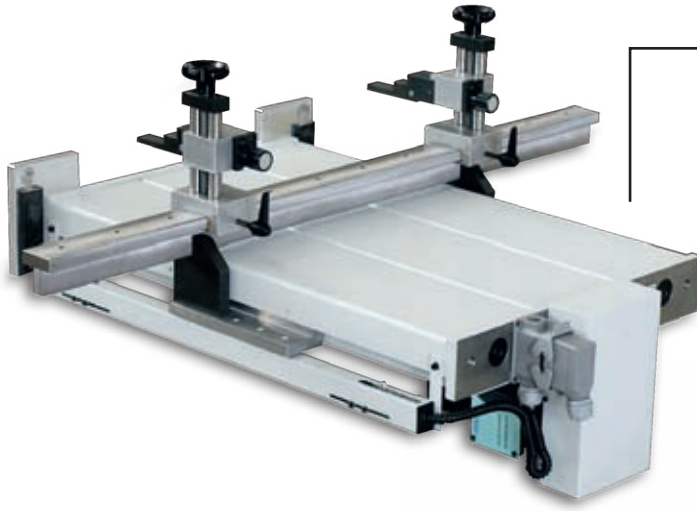
Finger interchangeable
stops
Puntal de referencias

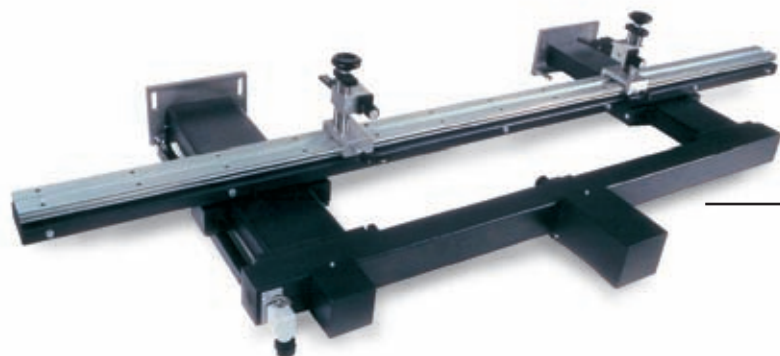
Accompagnatori

Bending supports
Acompañadores de chapa

Riscontri

Fingers
Topes





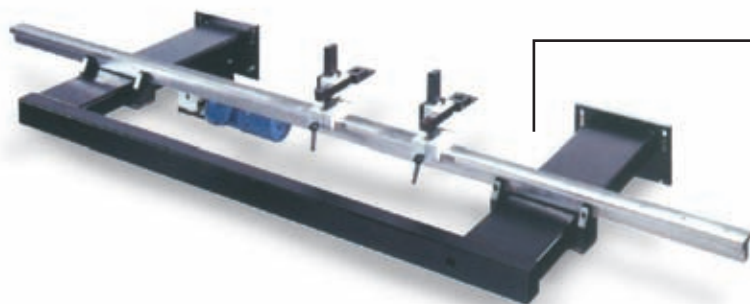
Registro Mod.1

Back Gauge Mod.1
Tope trasero Mod.1



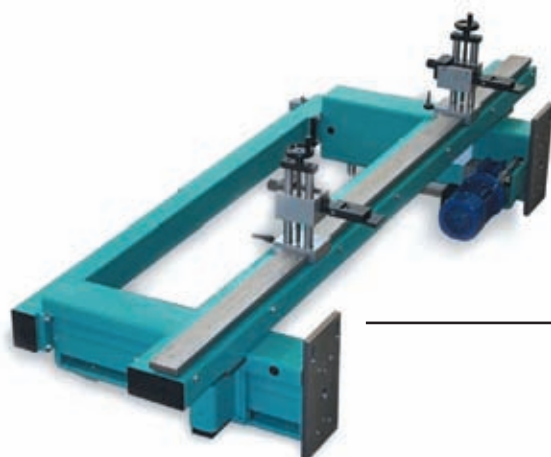
Registro Mod.8L

Back Gauge Mod.8L
Tope trasero Mod.8L



Registro Mod. M5

Back Gauge Mod.M5
Tope trasero Mod. M5



Registro Mod.8

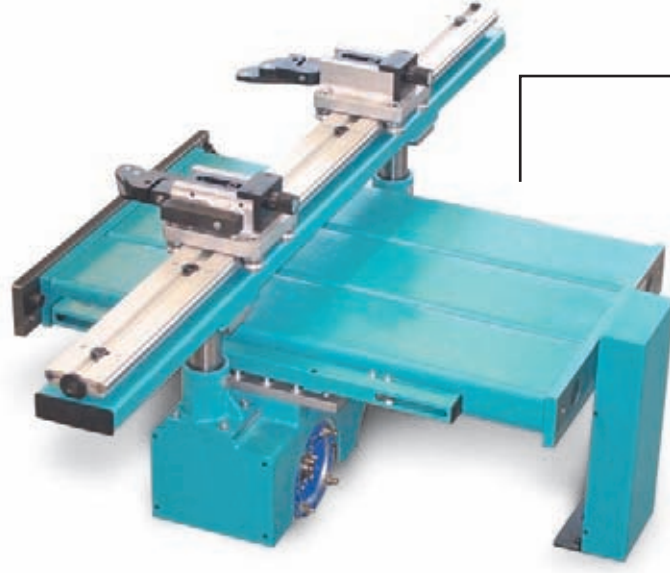
Back Gauge Mod.8
Tope trasero Mod.8

Registro Mod.25LM

Back Gauge Mod.25LM
Tope trasero Mod. 25LM

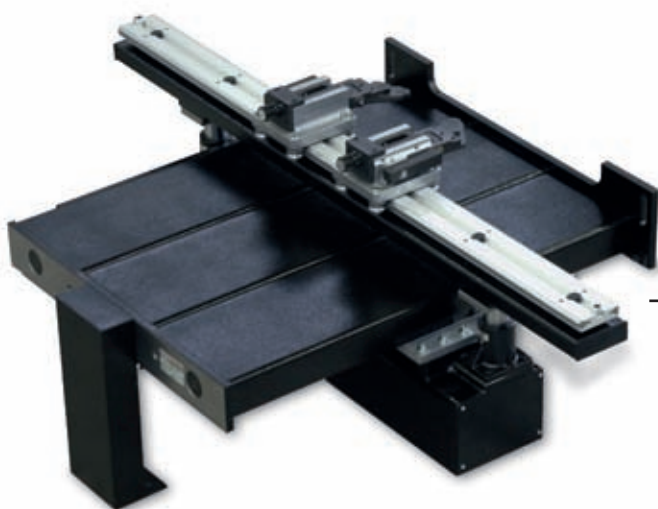
Registro Mod.M7

Back Gauge Mod.M7
Tope trasero Mod.M7



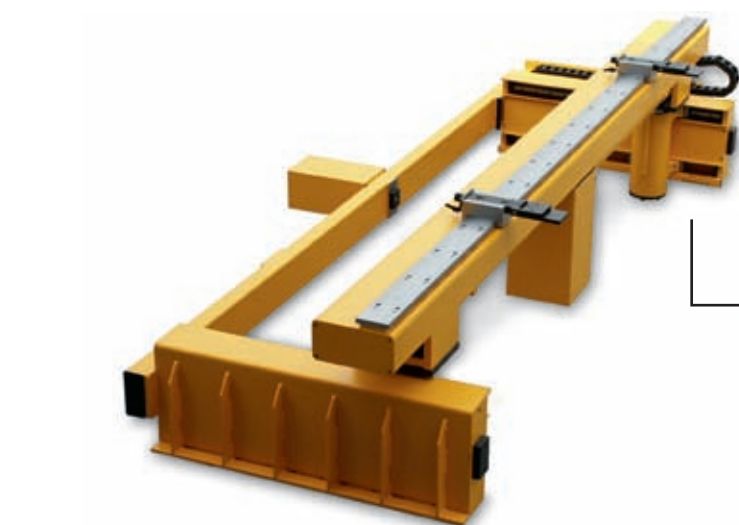
Registro Mod.1+RM

Back Gauge Mod.1+RM
Tope trasero Mod. 1+RM



Registro Mod.25L+RM

Back Gauge Mod.25L+RM
Tope trasero Mod.25L+RM



Registro Mod.9M

Back Gauge Mod.9M
Tope trasero Mod.9M

Registro Mod.9P

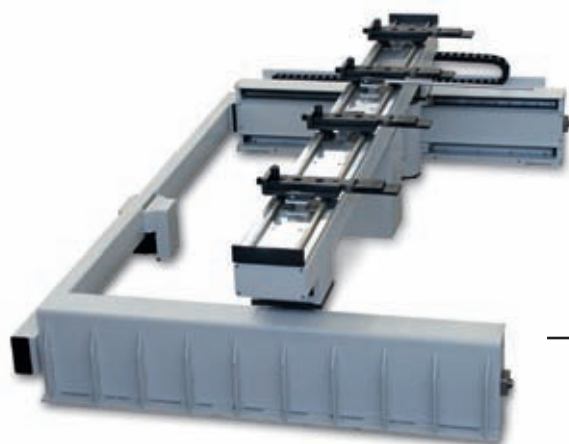
Back Gauge Mod.9P
Tope trasero Mod.9P

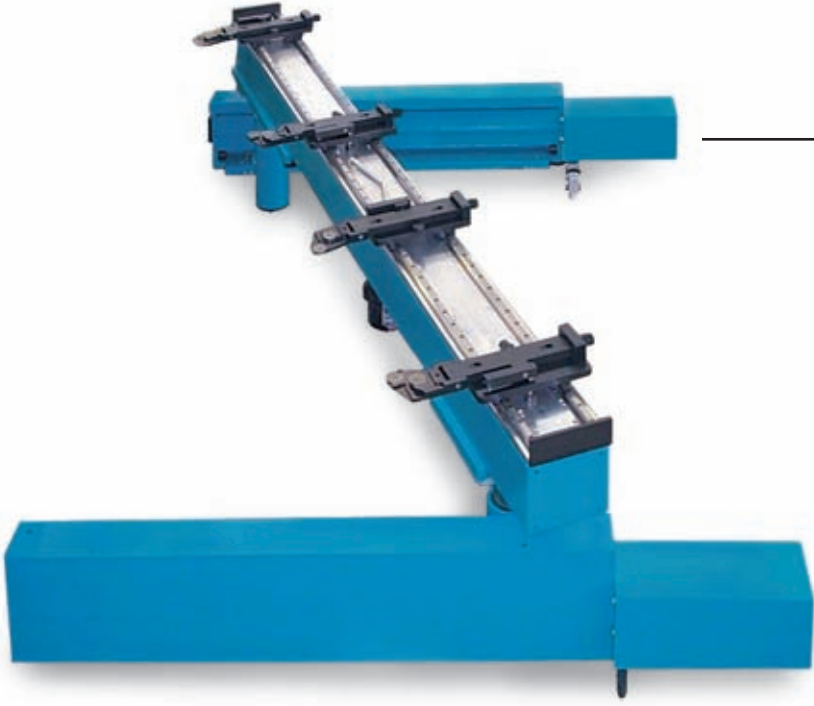
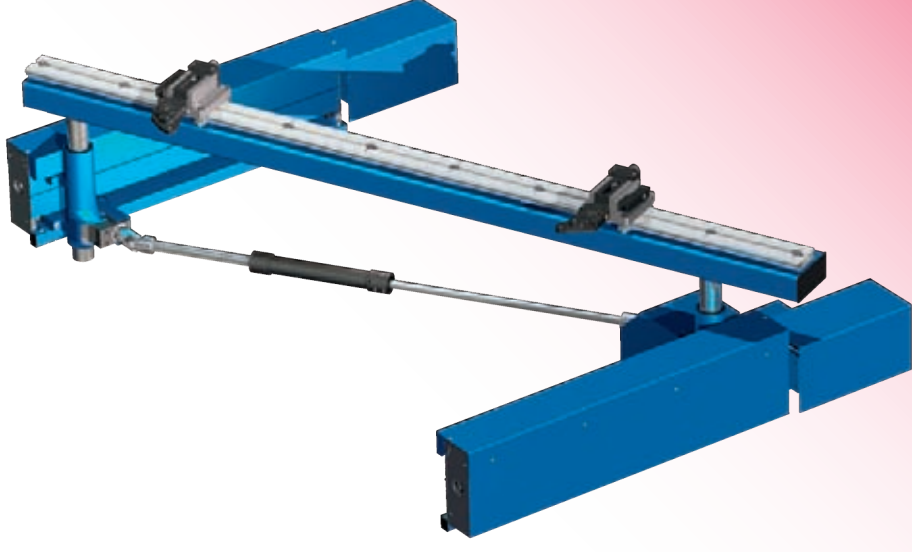
Registro Mod.9LM

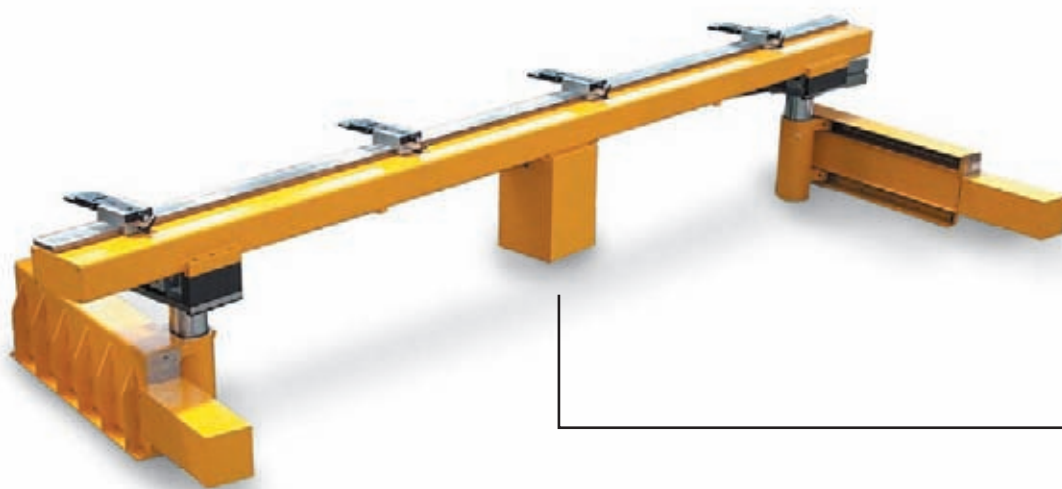
Back Gauge Mod.9LM
Tope trasero Mod.9LM

Registro Mod.9PM

Back Gauge Mod.9PM
Tope trasero Mod.9PM







Registro Mod.10P

Back Gauge Mod.10P
Tope trasero Mod.10P

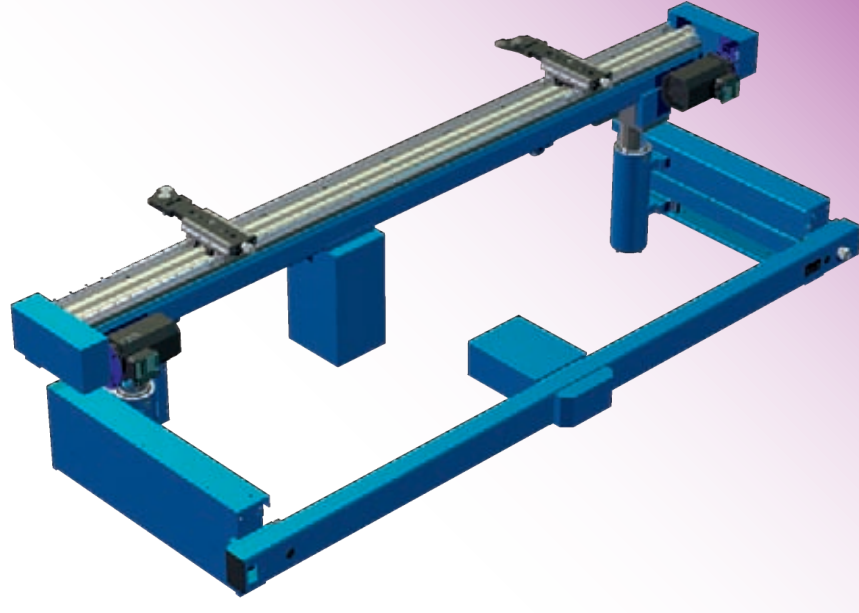
Registro Mod.10M

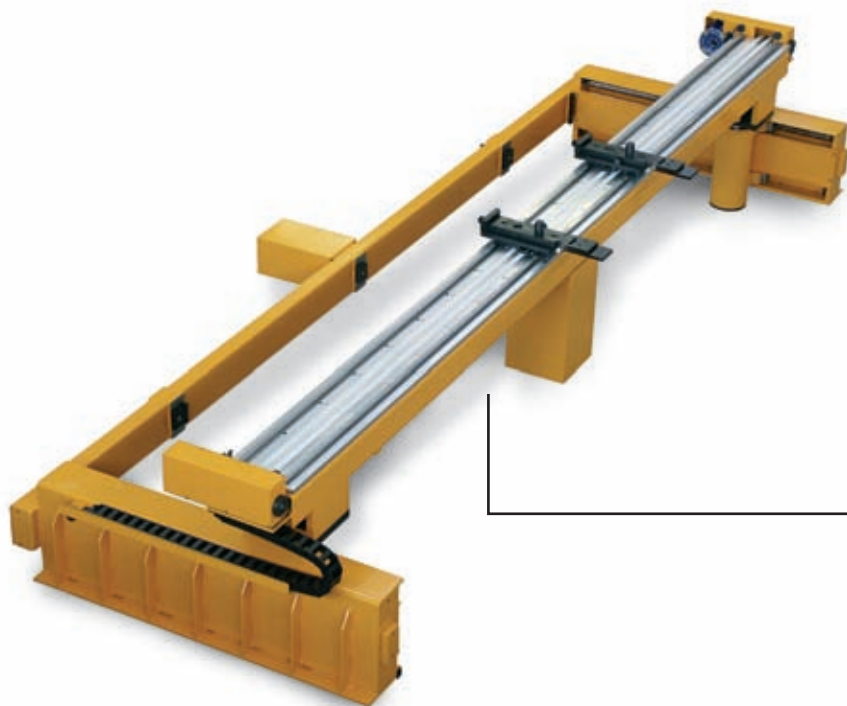
Back Gauge Mod.10M
Tope trasero Mod.10M



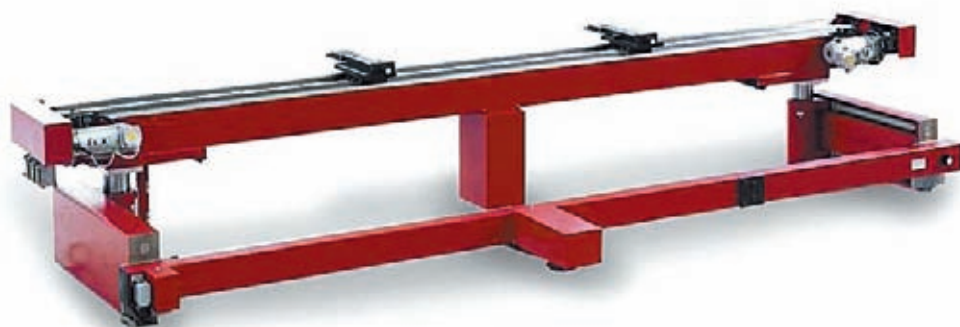
Registro Mod.10PM

Back Gauge Mod.10 PM
Tope trasero Mod.10PM



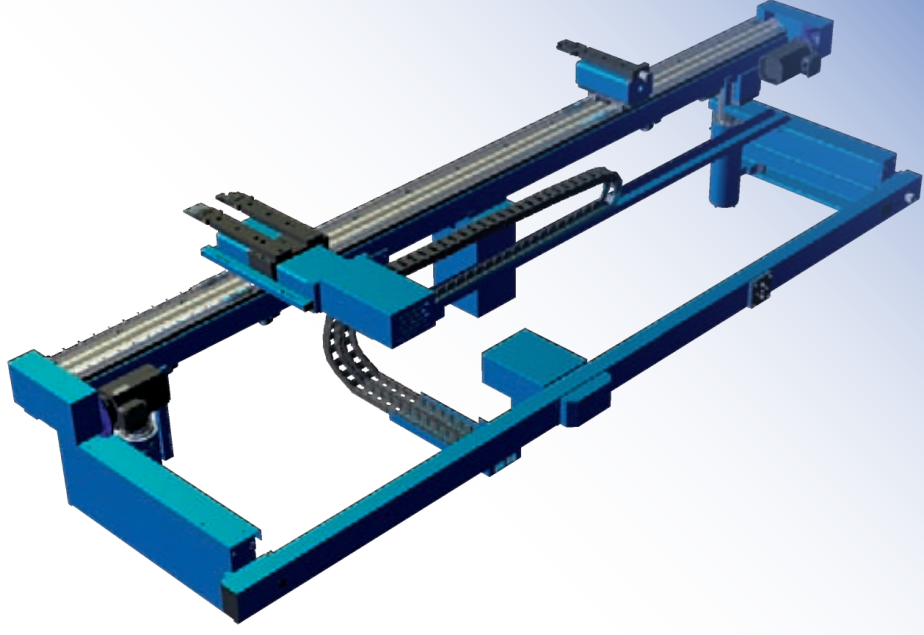


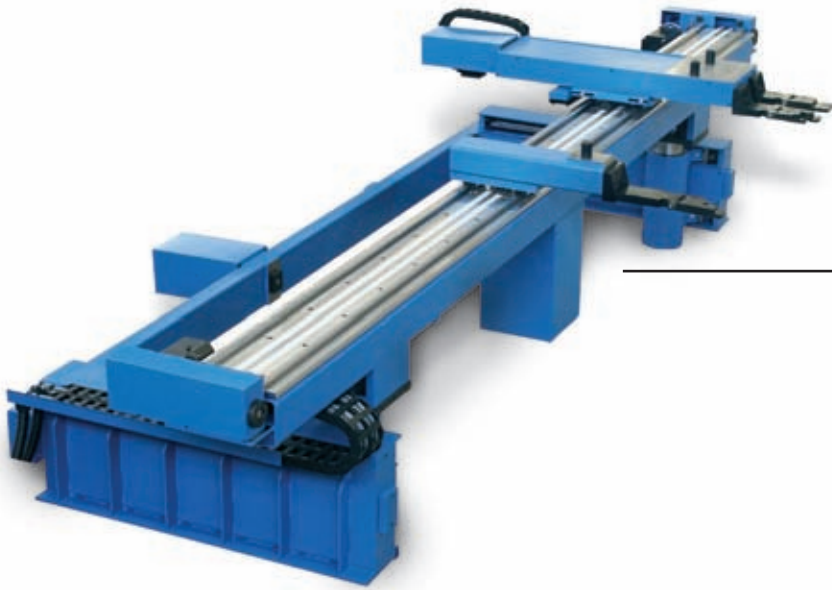
Registro Mod.11P
Back Gauge Mod.11P
Tope trasero Mod.11P



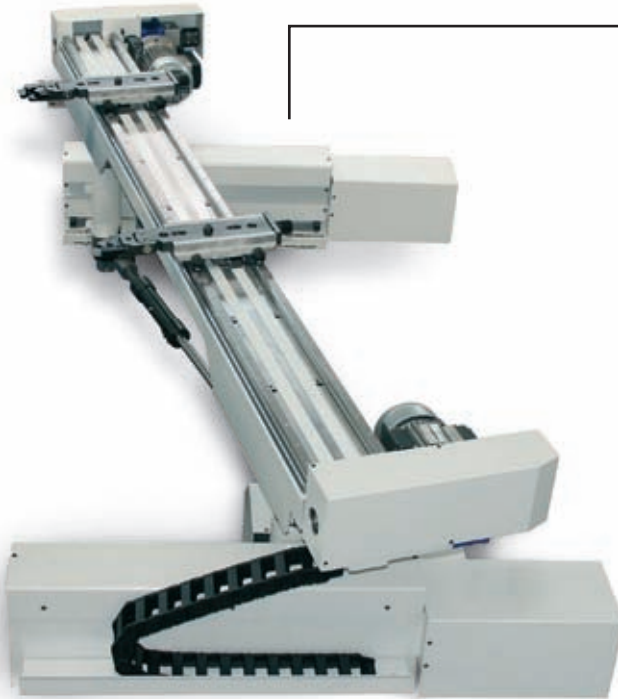
Registro Mod.11
Back Gauge Mod.11
Tope trasero Mod.11

Registro Mod.11L
Back Gauge Mod.11L
Tope trasero Mod.11L



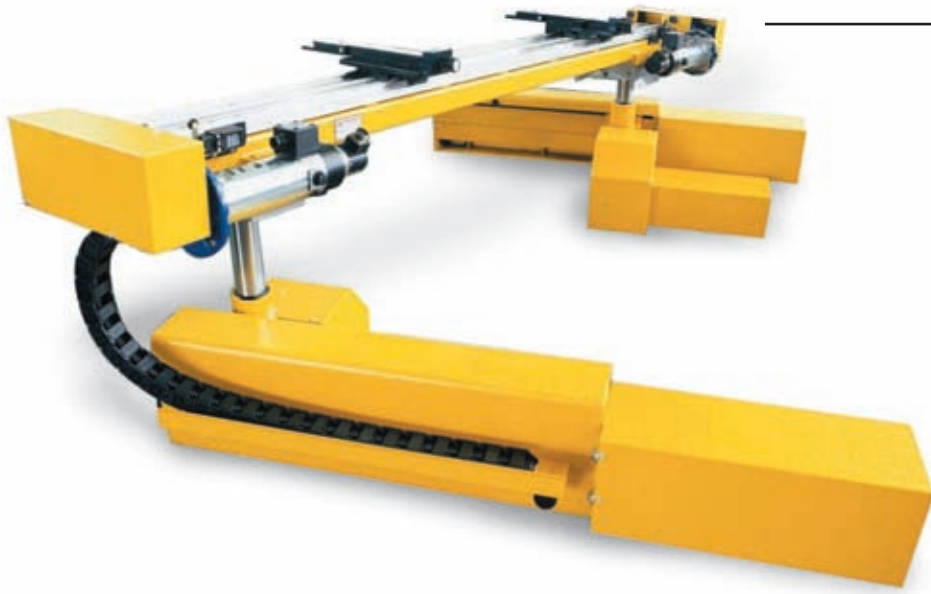
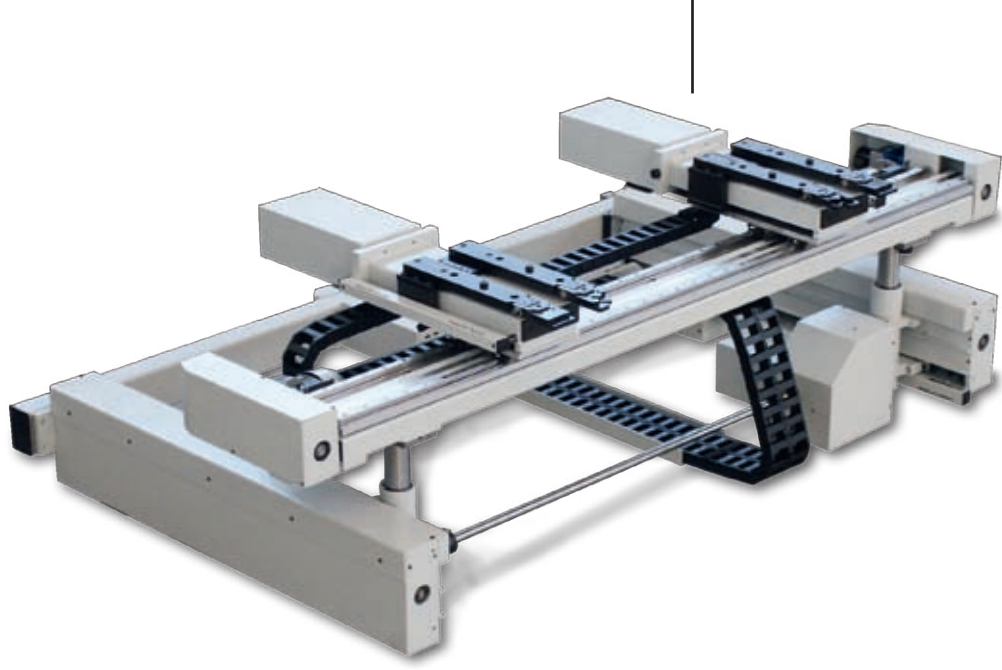


Registro Mod.11P+X5
Back Gauge Mod.11P+X5
Tope trasero Mod.11L+X5



Registro Mod.12L
Back Gauge Mod.12L
Tope trasero Mod.12L

Registro Mod.11L+X5
Back Gauge Mod.11L+X5
Tope trasero Mod.11L+X5



Registro Mod.11L+X5+X6

Back Gauge Mod.11L+X5+X6

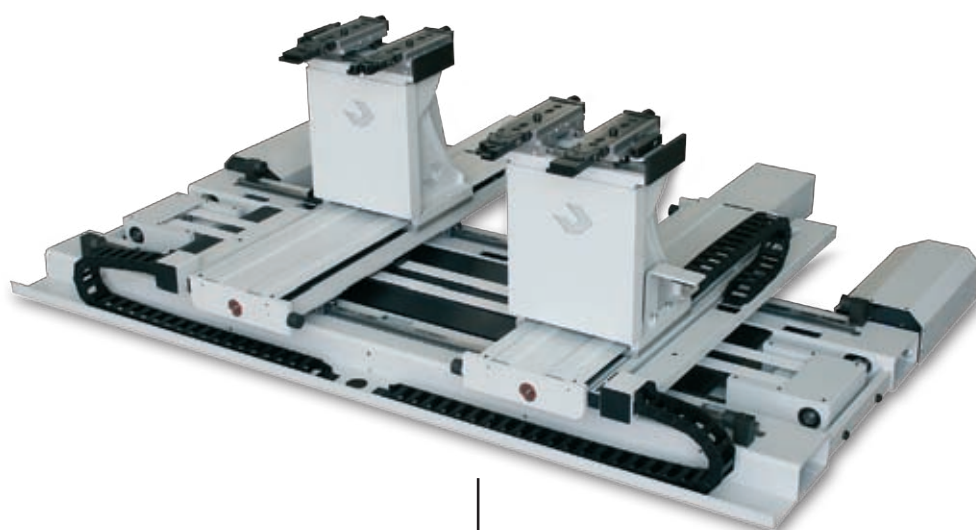
Tope trasero Mod.11L+X5+X6



Registro Mod.13P

Back Gauge Mod.13P

Tope trasero Mod.13P



Registro Mod.13L

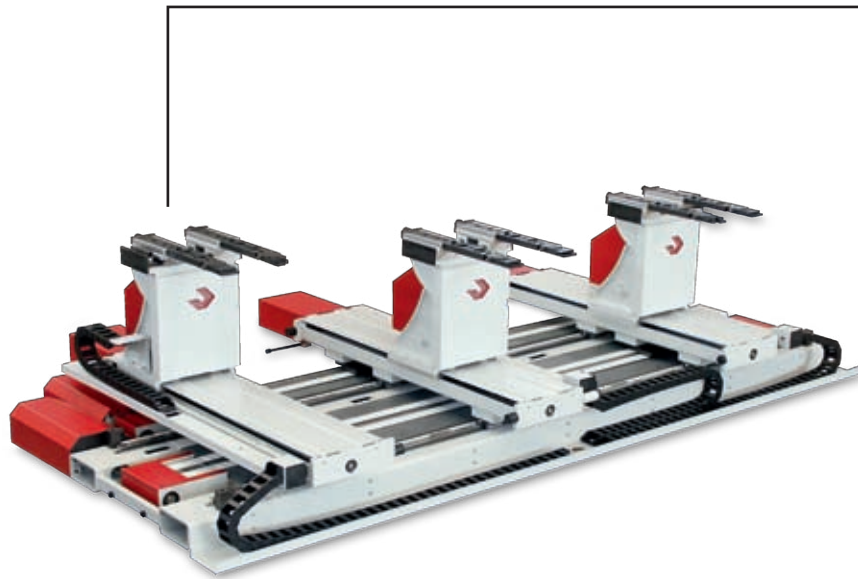
Back Gauge Mod.13L

Tope trasero Mod.13L

Registro Mod.ATF

Back Gauge Mod.ATF

Tope trasero Mod.ATF



Motori - Motors - Motores

AC Brushless 1÷6 Nm 3000 rpm

Azionamento digitale compatto 230 vac mono/trifase

Comandi: can open (ds 402); modbus; analogica

Feedback da encoder o resolver

Compact digital servodrive 230 vac monophase/three-phase

Drive input: can open (ds 402); modbus; analogic

Feedback from encoder or resolver

Accionamiento digital compacto 230 vac monofásico/trifásicos

Controles: can open (ds 402); modbus; analogic

Feedback da encoder o resolver



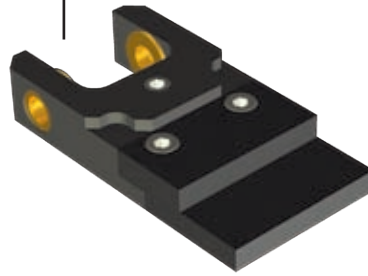
Registro Mod.ATF3

Back Gauge Mod.ATF3

Tope trasero Mod. ATF3

Puntale Mod.9LUD

Finger stop Mod.9LUD
Puntal Mod. 9LUD



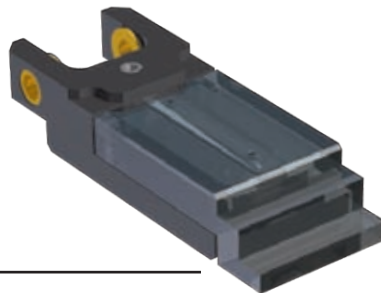
Puntale Mod.9LU

Finger stop Mod.9LU
Puntal Mod.9LU



Puntale Mod.12L

Finger stop Mod.12L
Puntal Mod.12L



Puntale Sensorizzato Mod.9LS

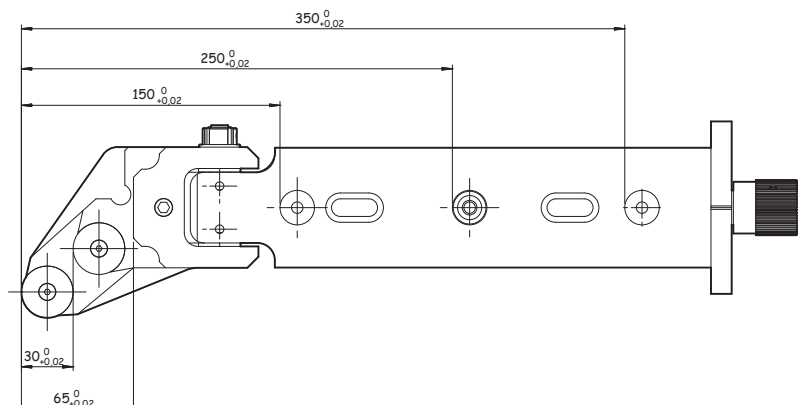
Sensor equipped stop
Mod.9LS

Puntal Sensorializado
Mod.9LS



Battute supplementari

Additional stops
Planos suplementarios



Caratteristiche:

Accompagnatore lamiera, scorrevole sulla parte frontale della pressa piegatrice, tramite guida a ricircolo di sfere.

Movimentazione di tipo meccanico.

Regolazione in altezza ± 60 mm.

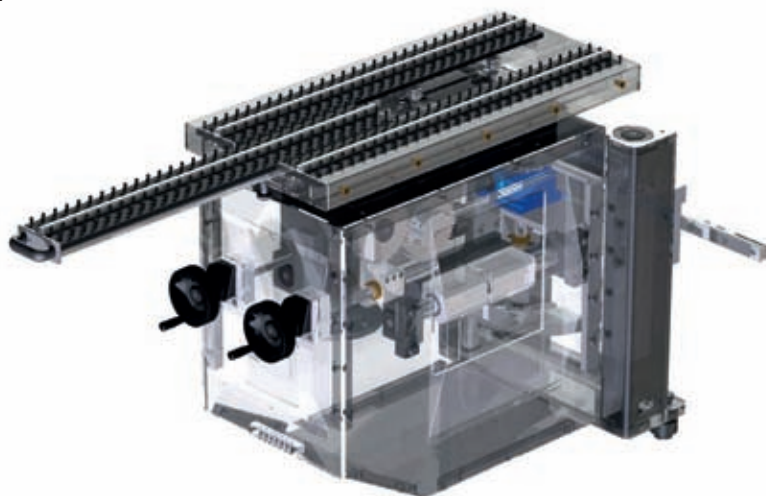
Regolazione di avvicinamento asse di piegatura di 60 mm.

Piano di sostegno lamiera prolungabile da 900 a 1500 mm.

Protezione totale degli organi in movimento.

Risoluzione meccanica $\pm 0,2^\circ$.

Angolo massimo 0-60°.



Characteristics:

Bending support, sliding long press brakes front, by linear ball guides.

Movement totally mechanic.

Vertical adjustment ± 60 mm.

Horizontal adjustment 60 mm on the bending line.

Metal plate support with brush, extendable from 900 up to 1500 mm.

Total protection of mechanical moving parts.

Mechanical accuracy $\pm 0,2^\circ$.

Max inclination 0-60°.

Características:

Acompañador de chapa, deslizante en la parte frontal de la prensa plegadora, mediante una guía de rodillos.

Manipulación de tipo mecánica.

Regulación de la altura ± 60 mm.

Regulación de la aproximación del eje de plegado de 60 mm.

Plano de apoyo para plegado prolongable de 900 a 1500 mm.

Protección total de los órganos de movimiento.

Resolución mecánica $\pm 0,2^\circ$.

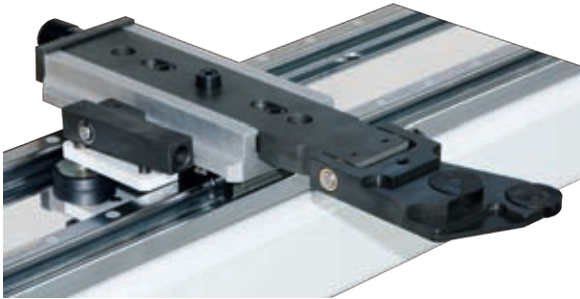
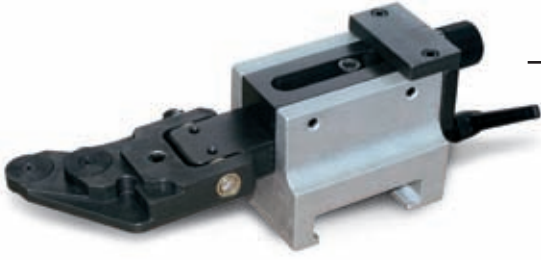
Ángulo máximo 0-60°.



Accompagnatore AP 01

Bending support AP 01

Acompañador de chapa AP 01



Registri ▶ Back Gauges ▶ Topes traseros

Caratteristiche Tecniche ▶ Technical Features ▶ Características técnicas

Modello Model Modelo	Assi Axis Ejes	Ton. Max. Ton. Max. Ton. Max.	Corsa X X stroke Recorrido X	Corsa R R stroke Recorrido R	Barra Min. Min. bar Barra Min.	Barra Max. Max. bar Barra Max	Fissaggio registro Fixing back gauges Fijación tope trasero
1	X	60	500	Man. 80	800	1500	Tavola - Table - Tabla
1 + R	X-R	60	500	150	1000	1500	Tavola - Table - Tabla
25 L	X	120	600	Man. 80	1100	2500	Tavola - Table - Tabla
25 L + R	X-R	120	600	150	1100	2500	Tavola - Table - Tabla
2	X	150	500-750-1000	Man. 80	1400	2500	Tavola - Table - Tabla
2 L	X	150	500-750-1000	Man. 80	2500	3500	Tavola - Table - Tabla
2 S	X	40	500-750-1000	Man. 80	300	500	Tavola - Table - Tabla
5	Man. X	120	Man. 500-750	Man. 80	1400	3500	Tavola - Table - Tabla
M 5	X	120	500-750	Man. 80	1400	3500	Tavola - Table - Tabla
M 7	X	400	500-750-1000	Man. 130	2500	5000	Tavola - Table - Tabla
8 L	X	250	500-750-1000	Man. 130	1500	5000	Spalle - Housings - Lateral
8	X	400	500-750-1000	Man. 130	2500	6000	Spalle - Housings - Lateral
8 P	X	800	750-1000	Man. 200	2500	8000	Spalle - Housings - Lateral
9 L	X-R	250	500-750-1000	160	1500	6000	Spalle - Housings - Lateral
9	X-R	400	500-750-1000	200	2500	6000	Spalle - Housings - Lateral
9 P	X-R	800	750-1000	250	2500	8000	Spalle - Housings - Lateral
10 L	X1-X2-R	250	500-750-1000	160	2500	5000	Spalle - Housings - Lateral
10	X1-X2-R	400	500-750-1000	200	2500	6000	Spalle - Housings - Lateral
10 P	X1-X2-R	800	750-1000	250	2500	8000	Spalle - Housings - Lateral
11 L	X-R-Z1-Z2	250	500-750-1000	160	1500	3500	Spalle - Housings - Lateral
11L+X5*	X1-X5-R-Z1-Z2	250	500-750-1000	160	1500	3500	Spalle - Housings - Lateral
11L+X5+X6*	X1-X5-X6-R-Z1-Z2	250	500-750-1000	160	1500	3500	Spalle - Housings - Lateral
11	X-R-Z1-Z2	400	500-750-1000	200	2500	6000	Spalle - Housings - Lateral
11+X5*	X1-X5-R-Z1-Z2	400	500-750-1000	200	2500	6000	Spalle - Housings - Lateral
11+X5+X6*	X1-X5-X6-R-Z1-Z2	400	500-750-1000	200	2500	6000	Spalle - Housings - Lateral
11 P	X-R-Z1-Z2	800	750-1000	250	2500	8000	Spalle - Housings - Lateral
11P+X5**	X1-X5-R-Z1-Z2	800	750-1000	250	2500	8000	Spalle - Housings - Lateral
11P+X5+X6**	X1-X5-X6-R-Z1-Z2	800	750-1000	250	2500	8000	Spalle - Housings - Lateral
12 L	X1-X2-R-Z1-Z2	250	500-750-1000	160	2000	3500	Spalle - Housings - Lateral
12	X1-X2-R-Z1-Z2	400	500-750-1000	200	2500	6000	Spalle - Housings - Lateral
12 P	X1-X2-R-Z1-Z2	800	750-1000	250	2500	8000	Spalle - Housings - Lateral
13 L	X1-X2-R1-R2-Z1-Z2	250	500-750-1000	160	2000	3500	Spalle - Housings - Lateral
13	X1-X2-R1-R2-Z1-Z2	400	500-750-1000	200	2500	6000	Spalle - Housings - Lateral
13 P	X1-X2-R1-R2-Z1-Z2	800	750-1000	250	2500	8000	Spalle - Housings - Lateral
ATF	X1-X2-R1-R2-Z1-Z2	400	750-1000	200	2000	6000	Spalle - Housings - Lateral
ATF 3	X1-X2-X3-R1-R2-R3-Z1-Z2-Z3	400	750-1000	200	3000	6000	Spalle - Housings - Lateral

* CORSA ASSE X5-X6 300 mm. / X5-X6 AXIS STROKE 300 mm. / Recorrido ejes X5-X6 300 mm

** CORSA ASSE X5-X6 400 mm. / X5-X6 AXIS STROKE 400 mm. / Recorrido ejes X5-X6 400 mm

CORSE ASSI E LUNGHEZZE SPECIALI DISPONIBILI SU RICHIESTA / SPECIAL AXIS STROKE AND LENGHT AVAILABLE ON ENQUIRY / RECORRIDOS EJES Y LARGOS ESPECIALES DISPONIBLES A PETICIÓN